

Agenda



Prepared for: Community Consultation Group Meeting
Location: Mt Cattlin Mine site
Date: 14th July 2021
Time: 08:00 AWST

Attendees		Apologies	
Katie Morgan (KMo)		Keith Dunlop (KD)	
Keith Muller (KM)		Gavin Pollock (GP)	
John Pullen (JP)		Geoff Fairhead (GF)	
Sue Leighton (SL)			
Lena Daw (LD)			
Kim Bennett (KB)			
Ken Norman (KN)			
Graham Steel (GS) (Alternate for GP)			
Agenda Items			Responsible
1. WELCOME			
2. Apologies			
3. Declaration of conflict of Interest			
4. Confirmation of the previous meeting minutes.			
5. Administrative Items			
6. Community Engagement Activities			
7. Complaints			
8. Rehabilitation and Closure			
9. Other Business			
10. Actions and Outcomes			
11. Next Meeting			
12. Close			

Minutes of Meeting



1. WELCOME

- KN opened the meeting @ 8.07am

2. APOLOGIES

- Keith Dunlop (KD)
- Gavin Pollock (GP)
- Geoff Fairhead (GF)

3. DECLARATION OF CONFLICT OF INTEREST

- No conflicts of interest were identified by CCG members.

4. CONFIRMATION OF THE PREVIOUS MEETING MINUTES

- 12 May 2021 CCG meeting – Previous meeting minutes confirmed.

5. ADMINISTRATIVE ITEMS

- SL – Can the powerpoint presentation be distributed in addition to the meeting minutes to CCG committee members
- KM – Provided an update on the merger between Galaxy and Orocobre, to be formalised on 26th August, 2021
Stated that this is a merger, not a takeover, due to the very similar assets held and crossover experience gained in combining companies
- KMo – Stated that the roll out of Merged Company core values will only occur up to 6 months after merger
- KM – Provided update on Galaxy Mt. Cattlin, James Bay (Canada) and Sal de Vida (Argentina) construction / operations, including new NW pit
- KM – Provided details on monthly hours worked and projections going forward for Mt. Cattlin operations
- KB – Requested access to the recent TV show “Our Town” episode, featuring Ravensthorpe
- JP - Dust results were tabled up to May 2021

6. COMMUNITY ENGAGEMENT ACTIVITIES

Community issues Raised

- KB – Asked about whether more local employment opportunities are available and update on Shutdown activities
- KB – Asked about flights on Galaxy charter plane from RAV airport to PER
- KMo – Provided reasons for this not currently happening, including different insurances needed for public transport and specific pilot licencing

Shire to discuss further with Rex and Virgin Galaxy currently scheduling 5 flights per week

- KB – Requested an update on Floater Road Tenders have closed and a preferred constructor has been agreed upon Galaxy are to pay the funds (in full) within the next 2 weeks Construction of the main part of the road will occur during harvest season, with the connections to existing roads to occur last, minimising impact to all existing road users Shire will advise all residents once final details are finalised
- KM – Provided further detail on blast process, timings and causes for cancellations
- KN – Suggested a SMS alert for blast times and road closures

Community Engagement Activities

- KM – Tabled the recent community support program, covering various organisations in Ravensthorpe and Hopetoun
- KMo – Advised that the Galaxy Open Day is planned for 31 Oct, in Hopetoun this year

Minutes of Meeting



7. COMPLAINTS

SL – Stated the response to the delay at blast guard checkpoints was timely and should be shared more widely with users of Floater Road

JP - Jody Edwards has been in brief contact with Galaxy (JP) and will contact again for further discussion at a more suitable time

LD – Suggested that information on actions taken by Galaxy to date are more widely distributed, such as via Community Spirit

KB – Suggested that current questions in Night shift Supervisor noise logbook could be modified to provide additional information

KM – Advised that 2 x Excavators are being replaced in next 6 weeks with lower noise output models Confirmed that the Galaxy Noise Consultant has measured various equipment noise outputs onsite

KN – Stated that a lot of vehicles use the highway and monitoring their noise, to compare with mine noise output could be useful

8. REHABILITATION AND CLOSURE

JP –Preparation of an area for rehabilitation is continuing throughout July, incl. placement and preparation of topsoil, suitable for seeding / planting

Note – Ravensthorpe High School not supplying any tubestock this year

KB – Suggested that planting rehab material timing is too late now topsoil spreading should be stopped to prevent loss via wind and rain Ryegrass was described as not a suitable choice for stabilising the currently spread topsoil, due to it removing nutrients and potential for outcompeting native seed
Recommended that overburden material from NW pit could be used for slope formation Select vegetation community for upper and lower slopes

JP - Esperance Farm Trees to supply tubestock and seed, when required

9. OTHER BUSINESS

KN – Asked about rumour that Galaxy had recently purchased a parcel of Aboriginal Corporation land KM was unaware of any such purchase

Minutes of Meeting



10. ACTION ITEMS AND OUTCOMES

- Previous meeting actions that have been closed will remain on the below list for succeeding meeting before being removed.
- Actions below summarise commitments made during the meeting:

Date Raised	No.	Action required	Who	Date due	Action Outcomes
14 July 2021		Table dust monitoring data	Galaxy (JP)	Each Meeting	
14 July 2021		Provide update (incl. photos) on rehabilitation status	Galaxy (JP)	Each Meeting	
14 July 2021		Investigate issue raised on behalf of Jody Edwards	Galaxy (JP)	Ms Edwards to advise timing	
14 July 2021		Contact seed and tubestock suppliers for quotes / availability	Galaxy (JP)	Ongoing	
14 July 2021		Provide access to all CCG members to the "Our Towns" episode	Galaxy (JP)	31 July 2021	Our Town Season 6 Episode 6 Ravensthorpe: Watch & Stream Online Free 7plus

11. NEXT MEETING

Meetings are scheduled to occur on the second Wednesday of the month at 8am.

The next scheduled meeting will be held on Wednesday 29th September, 2021 (Extension due to Ravensthorpe Wildflower Show timing)

12. CLOSE

Meeting closed @ 9.50am



GALAXY RESOURCES LIMITED

Mt Cattlin

Community Consultation Group

July 2021

Welcome

Community Consultation Group Meeting – 14 July, 2021



Agenda



Community Consultation Group Meeting – 14 July, 2021

1. WELCOME
2. Apologies
3. Declaration of conflict of Interest
4. Confirmation of the previous meeting minutes.
5. Administrative Items
6. Community Engagement Activities
7. Monitoring Results
8. Community Feedback
9. Rehabilitation and Closure
10. Other Business
11. Actions and Outcomes
12. Next Meeting
13. Close

Mt Cattlin Update

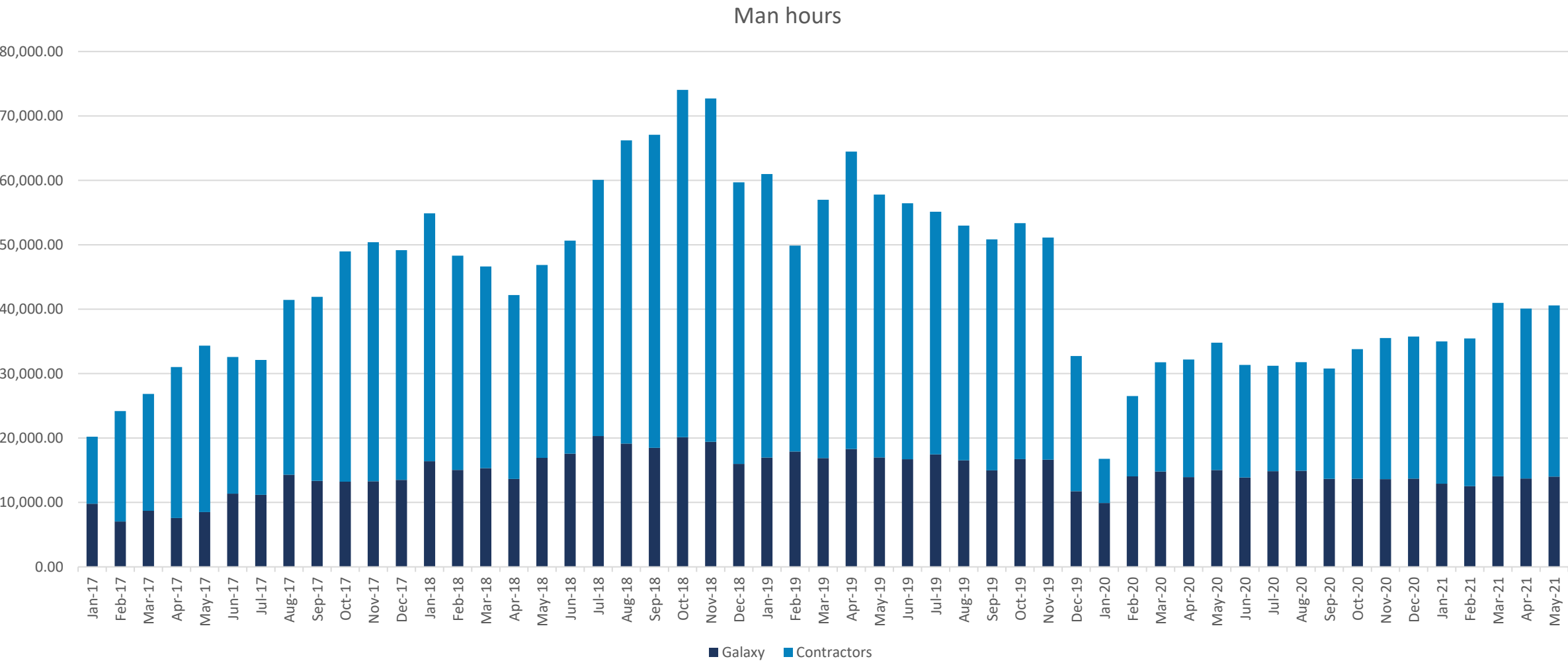
Merger with Orocobre



Mt Cattlin Update



Increased activity



Mt Cattlin Update

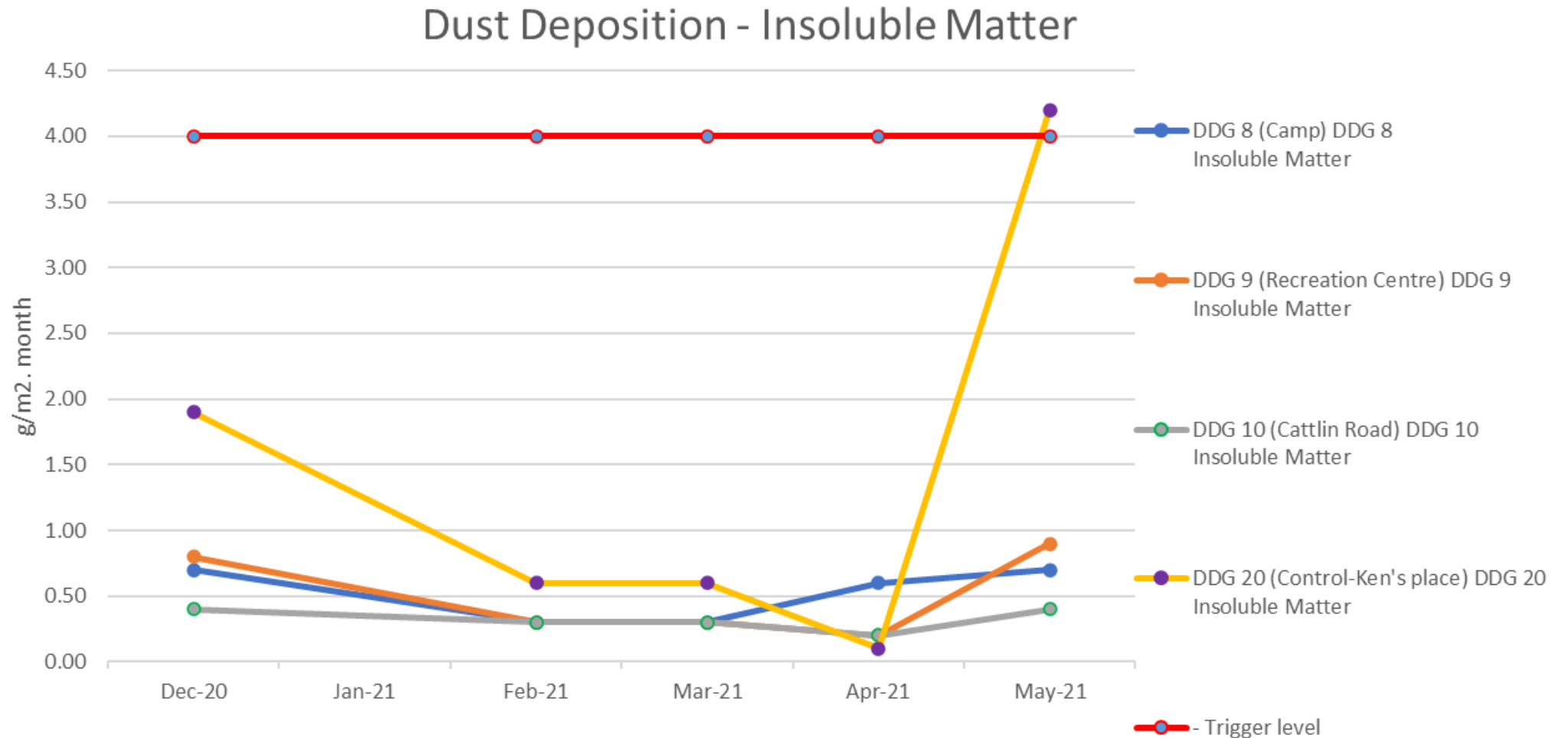
Community support

- Golf club with solar panels \$10k.
- Hopetoun playground \$25k.
- CRC (FBN) \$90k commitment over 3 years.
- Spirit newspaper, printing a few copies each run for the elderly that don't have access to electronic copies. \$2k.
- Hopetoun Primary School, installed refill stations for the kids. \$6k.
- Ravensthorpe District High School, winter dance \$5k.

Dust - Results from Dust Deposition Gauges (Ravensthorpe Area)



Dec 2020 – May 2021



Community Feedback

Realignment of Floater Road



Status update :

- Road design has been agreed to by the Shire
- Costing and Contractor finalised
- Harvest timing and road delays to be fully taken into account by Construction Contractor
- Payment mechanism agreed between Galaxy and the Shire
- With the Galaxy board and then to Orocobre board

Community Feedback

Realignment of Floater Road



Community Feedback



Noise from night operations

Discussion has occurred over social media about the noise from Galaxy night operations.

Initially it was a few individuals, including a formal complaint to Galaxy, but then had many residents add their comments.

The local community is vital to Galaxy performing well, providing numerous personnel, goods and services that keep our mine running smoothly. We understand our obligation to respect this relationship and ensure that continual efforts are made to minimise any potential disturbance to them.

When Galaxy commenced night operations, steps were required to minimise the effects of the noise generated by the mining and processing equipment. Activities that were put in place at this time included:

- Acoustic bunds constructed along the Southern Waste Dump (get specific info from Luke RLs etc)
- Quarterly visits for 3rd party sound level monitoring, analysis and reporting, from locations within town
- Blasts only conducted during daytime hours

Factors

Numerous factors are continually in play, whose combination can significantly change the sound levels received within town, including :

- Weather conditions (wind direction & speed and cloud cover)
- Type of equipment operating
- Quantity of equipment
- Location (stationary and mobile) of equipment
- Specific site activities, e.g. drilling, digging, hauling, pushing, crushing, processing

Noise from night operations

Actions taken to date :

Weather conditions such as north/north westerly winds this increases the likelihood of higher noise levels in Ravensthorpe.

This will be monitored daily by onsite department managers and in these adverse conditions the following shall be adhered to:

- Dozers are to only use 1st gear after 10pm (up to 5dB reduction)
- No dumping onto the Southern side of the Southern Waste Dump at night
- No rock breaking on the ore stockpile (ROM) at night
- Night Shift Supervisor to check sound levels in town each night, (regardless of weather conditions) to be recorded on daily mining meeting minutes
- Further detailed usage of forecast and actual weather relative to mining activities
- Evaluation of alternative mining equipment
- Evaluation of aftermarket sound reduction dozer track equipment (inside rubber plates)
- Wait for report recommendations from Noise Consultant

Noise from night operations

Multiple noise sources

Multiple noise sources create a larger sound level when close to them, but less so over distance.

When nearby, the sound levels increase as follows:

If the levels to be added differ by... (dB)	The total is the larger level, plus... (dB)
0 or 1	3
2 or 3	2
4 to 9	1
10 or more	0

Source: www.cibsejournal.com

e.g. if 2 similar type machines are running, the sound level will be 3dB higher than just 1 running, also, if a HV and an LV are both running, the difference will be closer to 1dB or none at all.

As the mobile mining equipment moves around the mine, the combination of their individual sound levels continues to change, causing different sound levels throughout the night.

Noise from night operations

Sound over distance

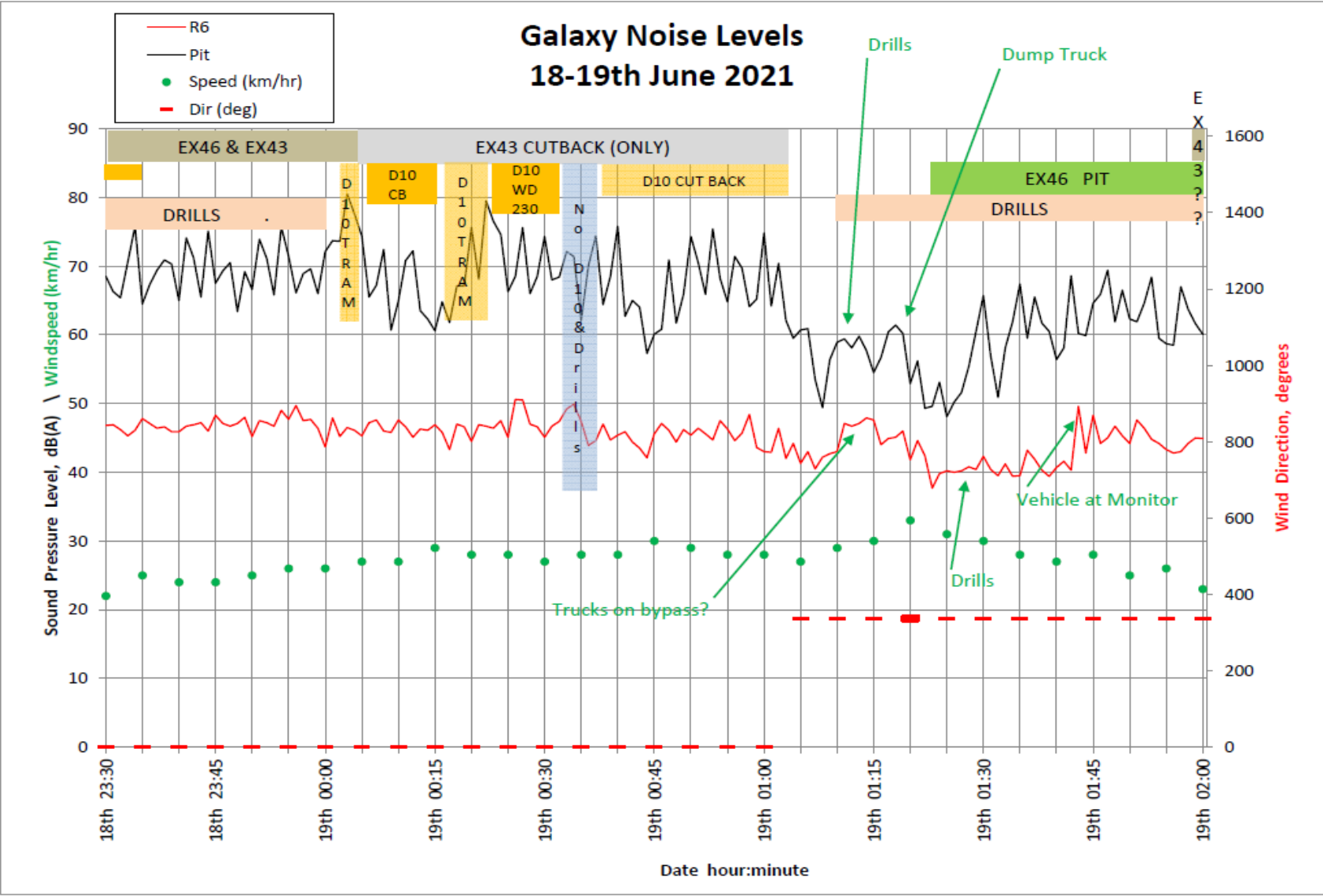
The table below shows what sound level will be heard, dependant on the distance away from the source.

For every doubling of distance, there is a 6dB decrease in sound level.

METRES	SOUND PRESSURE LEVEL IN db(a)																					
1	95	100	102	104	106	108	110	112	114	116	118	120	122	124	126	128	130	132	134	136	138	140
2	89	94	96	98	100	102	104	106	108	110	112	114	116	118	120	122	124	126	128	130	132	134
4	83	88	90	92	94	96	98	100	102	104	106	108	110	112	114	116	118	120	122	124	126	128
8	77	82	84	86	88	90	92	94	96	98	100	102	104	106	108	110	112	114	116	118	120	122
16	71	76	78	80	82	84	86	88	90	92	94	96	98	100	102	104	106	108	110	112	114	116
32	65	70	72	74	76	78	80	82	84	86	88	90	92	94	96	98	100	102	104	106	108	110
64	59	64	66	68	70	72	74	76	78	80	82	84	86	88	90	92	94	96	98	100	102	104
128	53	58	60	62	64	66	68	70	72	74	76	78	80	82	84	86	88	90	92	94	96	98
256	47	52	54	56	58	60	62	64	66	68	70	72	74	76	78	80	82	84	86	88	90	92
512	41	46	48	50	52	54	56	58	60	62	64	66	68	70	72	74	76	78	80	82	84	86
1024	35	40	42	44	46	48	50	52	54	56	58	60	62	64	66	68	70	72	74	76	78	80
2048	29	34	36	38	40	42	44	46	48	50	52	54	56	58	60	62	64	66	68	70	72	74

Community Feedback

Noise from night operations



Rehabilitation

September 2020



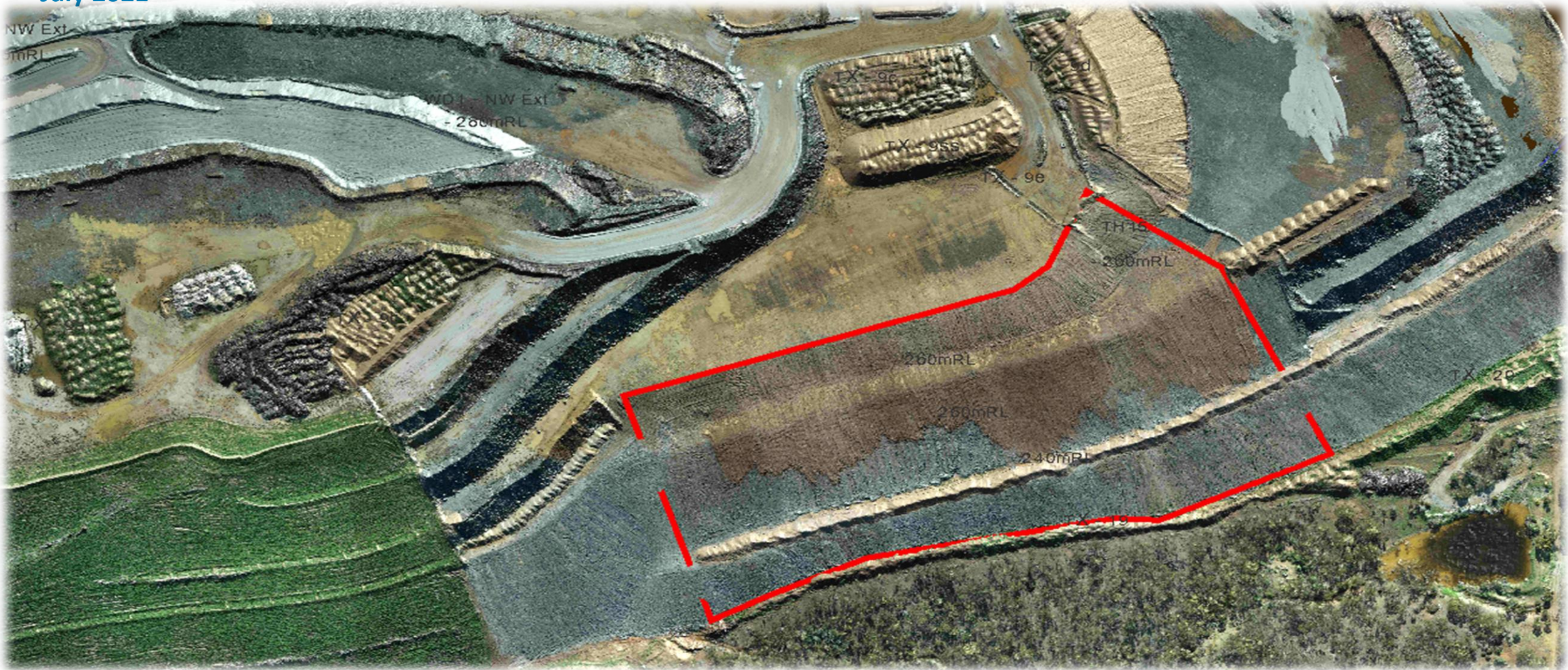
Rehabilitation

May 2021



Rehabilitation

July 2021



Thank You

Community Consultation Group Meeting – 12 May, 2021

