



# Agency Advisory #4

## COVID-19 (Coronavirus disease)

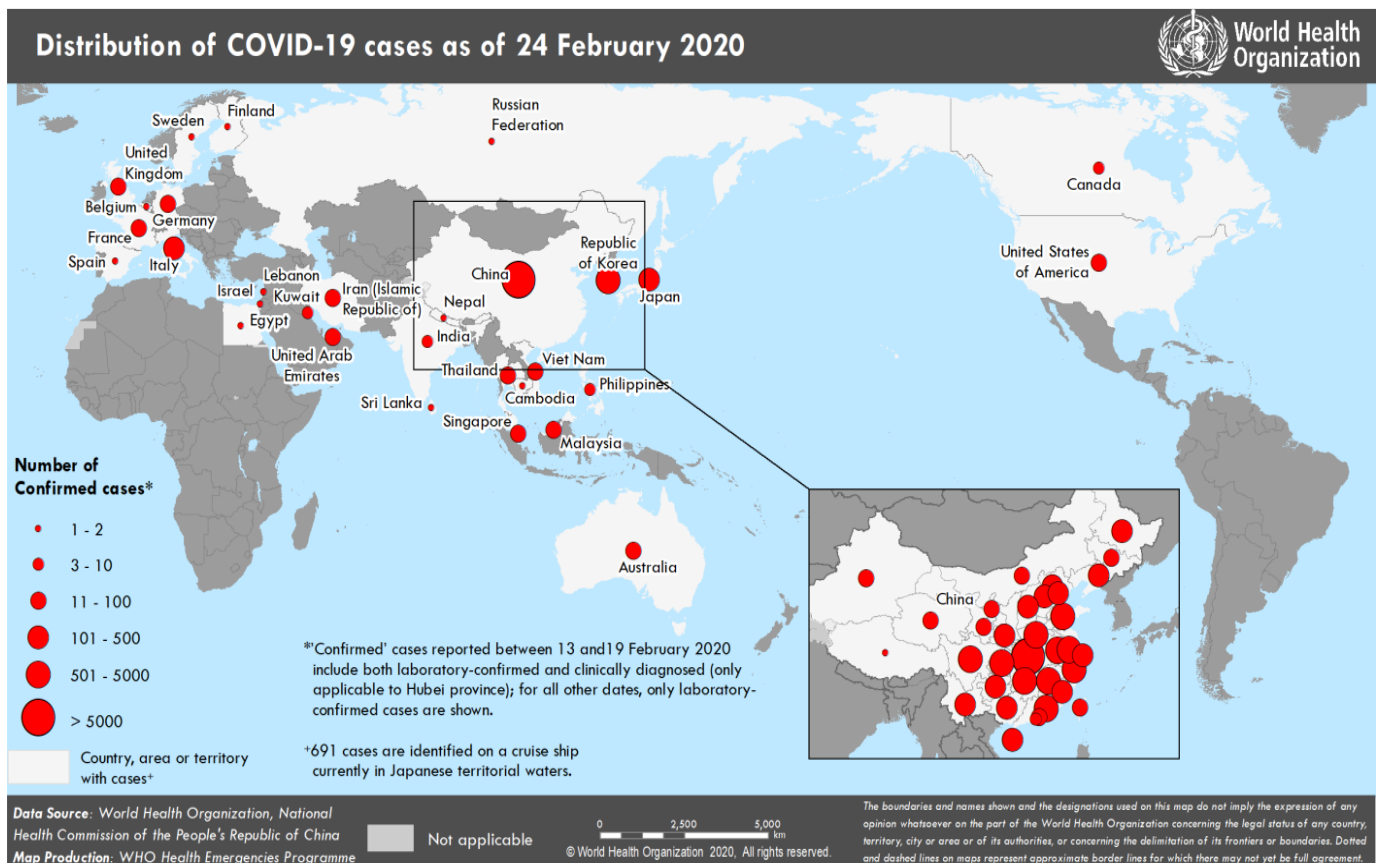
Tuesday 25 February 2020 14:00 Hours

This advisory has been authorised by the PHEOC Coordinator, Dr Revle Bangor-Jones

### New Information

- As of 25 February 2020, there is **one** confirmed case in WA, associated with the Diamond Princess cruise ship. An additional **325** people tested for COVID-19 in WA have returned a negative result.
- As of 06:30 25 February 2020, **22** confirmed cases have been detected in Australia: four cases from NSW, eight cases from QLD, three cases from SA, six cases from VIC, and one case from WA. The initial 15 cases had either a direct or indirect links to Wuhan, Hubei Province, China. All the initial 15 cases have cleared their infection. Seven cases have been reported among passengers who were on the Diamond Princess cruise ship repatriation flight from Japan. The latter cases are being repatriated to their home jurisdictions for isolation and care.
- The Australian Government has assisted 170 passengers of the Diamond Princess to depart Japan. Passengers will be required to undertake a further 14-day quarantine period at the Howard Springs Accommodation Village, Darwin. The Australian Embassy in Tokyo continues to provide consular support to 47 passengers who tested positive to COVID-19, those who chose to remain behind in Japan, and those who have opted to finish quarantine on the Diamond Princess. Any Diamond Princess passengers who were not on the assisted flight will not be allowed on other flights to Australia until 4 March 2020.
- According to the most recent WHO Situation Report dated 24 February 2020, in the past 24 hours:
  - Worldwide: **715** new confirmed cases were reported (**79,331** total)
  - In China: **415** new confirmed cases were reported (**77,262** total); **150** new deaths were reported (**2,595** total)
  - Outside China: **300** new confirmed cases were reported (**2,069** total). **Kuwait has reported its first confirmed cases (3 cases). Six new deaths outside China were reported.**
- Australian guidelines have been expanded to recommend clinicians consider testing people with a clinically compatible illness who travelled to any of the following countries in the 14 days before onset of symptoms: **Hong Kong, Indonesia, Iran, Japan, Singapore, South Korea and Thailand.** The recommendation does not apply to passengers who have only been in transit through an airport in these countries.

- The Commonwealth has extended the following travel restrictions for people entering Australia, until **28 February 2020**:
  - all travellers who have left or transited through mainland China on or after 1 February 2020 must self-quarantine until 14 days after leaving China.
  - Australian citizens, permanent residents and their immediate family who have left or transited through mainland China will be able to enter Australia, as will airline crews who have been using appropriate personal protective equipment.
  - foreign nationals (excluding permanent residents of Australia) will not be allowed to enter Australia until 14 days after they have left or transited through mainland China.
- As of 23 February 2020, the advice of the DFAT for travel to Japan and South Korea (Republic of Korea) is '**level 2 – exercise a high degree of caution**'. It is also advised that travellers reconsider the need to travel to Daegu and Chengdu due to significant outbreaks of COVID-19 in those cities.
- The advice of the Department of Foreign Affairs and Trade regarding travel to mainland China remains '**level 4 – do not travel**'.
- Chief Health Officer statement COVID-19 update #6  
<https://ww2.health.wa.gov.au/Media-releases/2020/Chief-Health-Officer-statement-COVID19-update-6>
- Australian Health Protection Principal Committee (AHPPC) statement on coronavirus (COVID-19)  
<https://www.health.gov.au/news/australian-health-protection-principal-committee-ahppc-statement-on-coronavirus-covid-19>
- The diagram below from the WHO illustrates the distribution of COVID-19 cases globally as of 24 February 2020, see link.  
[https://www.who.int/docs/default-source/coronaviruse/situation-reports/20200224-sitrep-35-covid-19.pdf?sfvrsn=1ac4218d\\_2](https://www.who.int/docs/default-source/coronaviruse/situation-reports/20200224-sitrep-35-covid-19.pdf?sfvrsn=1ac4218d_2)



## Summary of other key information

- On 30 January 2020, the World Health Organization (WHO) International Health Regulations Emergency Committee declared the outbreak of COVID-19 a Public Health Emergency of International Concern (PHEIC).
- On 11 February WHO officially named the disease caused by the novel coronavirus as COVID-19.
- The Australian Health Sector Emergency Response Plan for Novel Coronavirus has been released (the COVID-19 Plan) and includes an overview of the national approach and operational plan for response. <https://www.health.gov.au/resources/publications/australian-health-sector-emergency-response-plan-for-novel-coronavirus-covid-19>
- On 29 January 2020, 'Human coronavirus with pandemic potential' was declared an urgently notifiable disease under Part 9 of the Western Australian *Public Health Act 2016*.
- The Communicable Disease Control Directorate, WA Department of Health is leading the response to COVID-19 in WA, with support from the Population/Public Health Units.
- The best way to protect yourself and others against COVID-19 is to practise good hygiene. WA Health does not recommend the use of facemasks for the general community (who have no symptoms of respiratory illness), to prevent the risk of contracting COVID-19. See our fact sheet for further information.  
<https://ww2.health.wa.gov.au/~media/Files/Corporate/general%20documents/Infectious%20diseases/PDF/Coronavirus/Coronavirus%20advice%20on%20the%20use%20of%20masks%20in%20the%20community.pdf>
- WA Health has developed a FAQ fact sheet for your information. This fact sheet is regularly updated as information changes.  
<https://ww2.health.wa.gov.au/~media/Files/Corporate/general%20documents/Infectious%20diseases/PDF/Coronavirus/coronavirus-faqs-6-Feb.pdf>
- Biosecurity officers from the Australian Government Department of Agriculture, Water and the Environment, with the support of WA Health staff, continue to meet all passengers arriving in Australian airports who have travelled to mainland China in the past 14 days, undertaking assessment and providing information on testing and isolation as appropriate.

## Self-quarantine (self-isolation) guidance

There is an outbreak of COVID-19 in mainland China.

If you have travelled from mainland China or been in close contact of a confirmed case of COVID-19, special restrictions apply.

### Who needs to self-quarantine?

To help limit the spread of COVID-19, you must self-quarantine in the following circumstances:

- If you have left or transited through mainland China in the last 14 days, you must isolate yourself for 14 days from the date of leaving mainland China.
- If you have been in close contact with a proven case of COVID-19, you must isolate yourself for 14 days from the date of last contact with the confirmed case.

Isolation Guide (Commonwealth Department of Health COVID-19 isolation guide)

<https://www.health.gov.au/resources/publications/coronavirus-covid-19-isolation-guidance>

## More information

**National Coronavirus Health Information Line: 1800 020 080**

- International information and updates: World Health Organization (<https://www.who.int/emergencies/diseases/novel-coronavirus-2019>)
- Various resources for employers, schools and higher education, health, aged care, childcare, transport, travel and hotel sectors are available at the following websites:
  - WA Department of Health (<https://health.wa.gov.au/coronavirus>)
  - HealthyWA (<http://healthywa.wa.gov.au/coronavirus>)
  - Commonwealth Government (<https://www.health.gov.au/health-topics/novel-coronavirus-2019-ncov>)
  - COVID-19 Mythbusters (World Health Organization) (<https://www.who.int/emergencies/diseases/novel-coronavirus-2019/advice-forpublic/mythbusters> )

**Next advice** - The next agency advisory will be issued on **Friday 28 February 2020**.

© Department of Health 2020

Copyright to this material is vested in the State of Western Australia unless otherwise indicated. Apart from any fair dealing for the purposes of private study, research, criticism or review, as permitted under the provisions of the *Copyright Act 1968*, no part may be reproduced or re-used for any purposes whatsoever without written permission of the State of Western Australia.

[health.wa.gov.au](https://health.wa.gov.au)