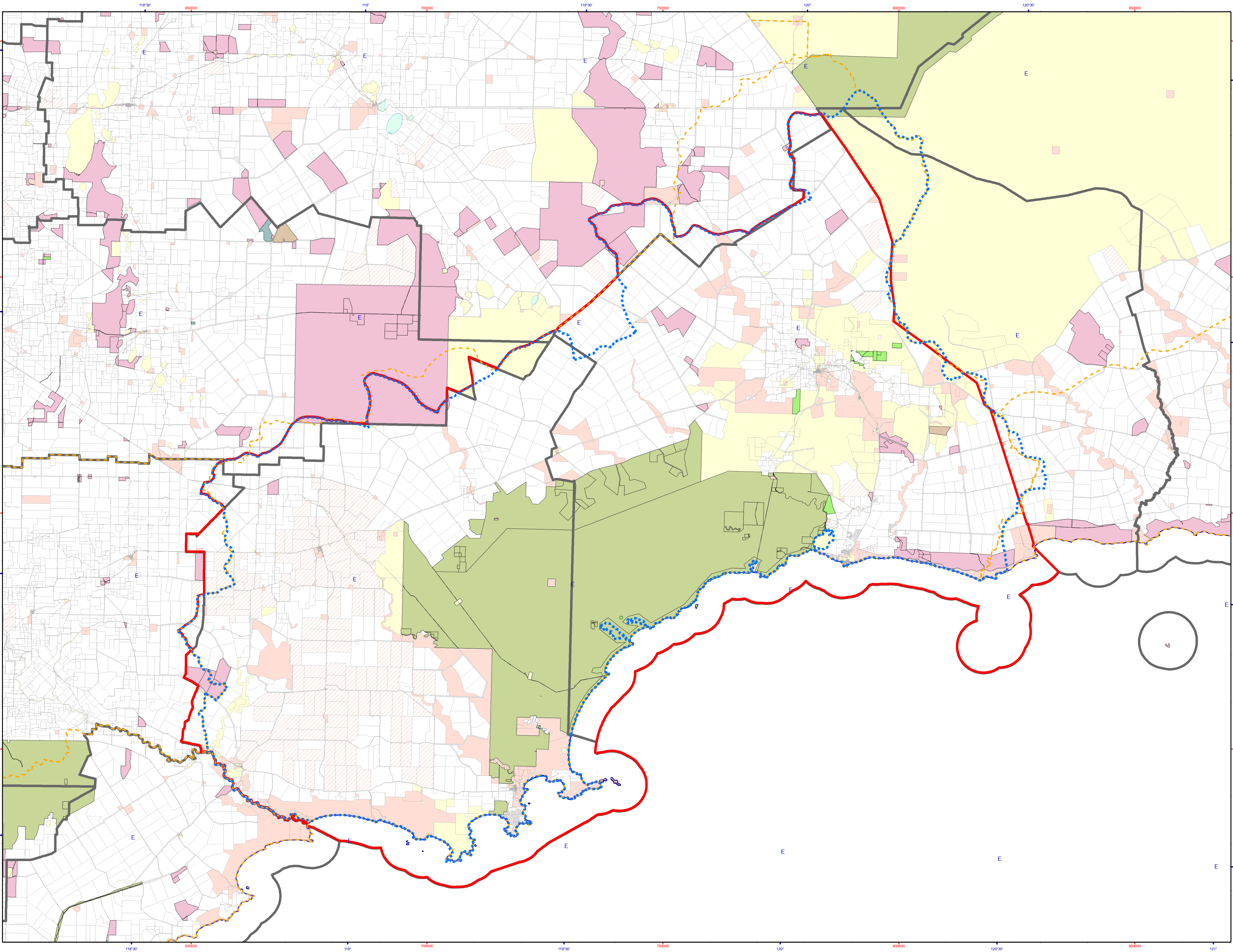
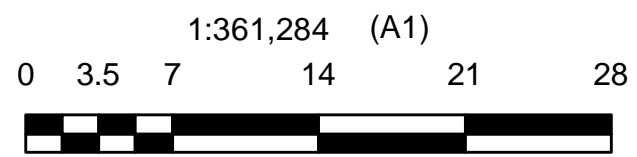


Proposed Fitzgerald Biosphere Boundary

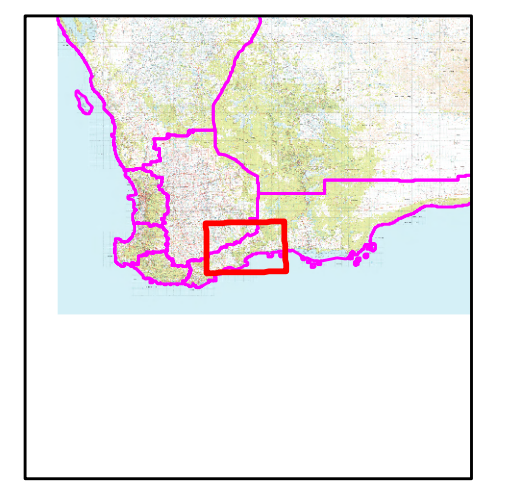


- Legend**
- Fitzgerald biosphere
 - SCHM Subregions
 - Proposed Biosphere Boundary
 - Local Govt. Authorities (LGA)
- DEC Estate (Statewide)**
- 501(V) Reserve
 - 501(VN) Reserve
 - CALM Exec Body
 - CALM Exec Body Freehold
 - Conservation Park
 - Crown Freehold - Dept Interest
 - Former Leasehold
 - Marine Management Area
 - Marine Nature Reserve
 - Marine Park
 - Miscellaneous Reserve
 - National Park
 - Nature Reserve
 - State Forest
 - Timber Reserve
- WHEATBELT Cadastre (Land Parcels)**
- Crown Lease
 - Crown Reserve
 - Freehold
 - Lease / Reserve
 - Lease on State Forest / Timber Reserve
 - Marine Park
 - Public Roads
 - State Forest / Timber Reserve
 - Unallocated Crown Land
 - Water
- SOUTH COAST Cadastre (Land Parcels)**
- Crown Lease
 - Crown Reserve
 - Freehold
 - Lease / Reserve
 - Lease on State Forest / Timber Reserve
 - Marine Park
 - Public Roads
 - State Forest / Timber Reserve
 - Unallocated Crown Land
 - Water
 - VIA Coast

0



Kilometres
Projection: Universal Transverse Mercator
MGA Zone 50. Datum: GDA94



Produced by the
Department of
Environment and Conservation



Graticule shown at 30 minutes intervals
Grid shown at 50000 metre intervals

Roads and tracks on land managed by DEC may contain unmarked hazards and their surface condition is variable. Exercise caution and drive to conditions on all roads.
The Dept. of Environment and Conservation does not guarantee that this map is without flaw of any kind and disclaims all liability for any errors, loss or other consequence which may arise from relying on any information depicted.

Produced at 15:28pm, on June 28, 2012